

Karplus lab: protein structure prediction and design

Kevin Karplus

`karplus@soe.ucsc.edu`

Biomolecular Engineering Department

Undergraduate and Graduate Director, Bioinformatics

University of California, Santa Cruz



Outline of Talk

- 🦖 What is a protein?
- 🦖 The folding problem and variants on it:
 - Local structure prediction
 - Fold recognition
 - Comparative modeling
 - “Ab initio” methods
 - Contact prediction
- 🦖 Protein Design



What is a protein?

- ⚠ There are many abstractions of a protein: a band on a gel, a string of letters, a mass spectrum, a set of 3D coordinates of atoms, a point in an interaction graph,
- ⚠ For us, a protein is a long skinny molecule (like a string of letter beads) that folds up consistently into a particular intricate shape.
- ⚠ The individual “beads” are amino acids, which have 6 atoms the same in each “bead” (the *backbone* atoms: N, H, CA, HA, C, O).
- ⚠ The final shape is different for different proteins and is essential to the function.
- ⚠ The protein shapes are important, but are expensive to determine experimentally.

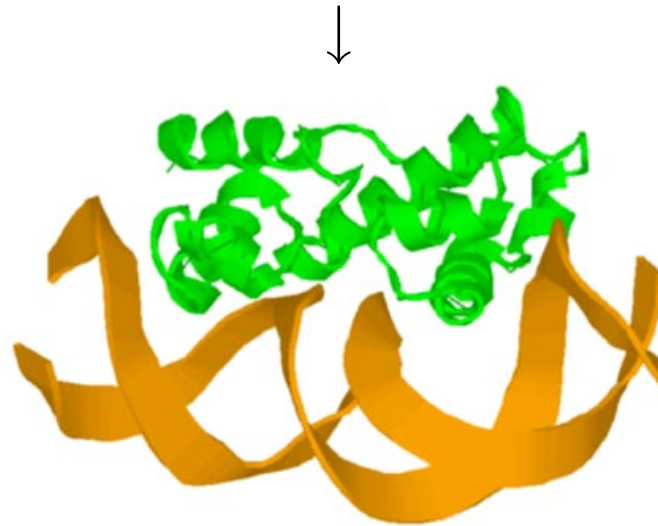


Folding Problem

The *Folding Problem*:

If we are given a sequence of amino acids (the letters on a string of beads), can we predict how it folds up in 3-space?

MTMSRRNTDA ITIHSILDWI EDNLESPLSL EKVSEKSGYS KWHLQRMFKK
ETGHSLGQYI RSRKMTEIAQ KLKESNEPIL YLAERYGFES QQTLTRTFKN
YFDVPPHKYR MTNMQGESRF LHPLNHYNS



Too hard!



Fold-recognition problem

The *Fold-recognition Problem*:

Given a sequence of amino acids A (the *target* sequence) and a library of proteins with known 3-D structures (the *template* library), figure out which templates A match best, and align the target to the templates.

- 🚩 The backbone for the target sequence is predicted to be very similar to the backbone of the chosen template.



New-fold prediction

- 🦖 What if there is *no* template we can use?
- 🦖 We can try to generate many conformations of the protein backbone and try to recognize the most protein-like of them.
- 🦖 Search space is huge, so we need a good conformation generator and a cheap cost function to evaluate conformations.



Secondary structure Prediction

- ⚠ Instead of predicting the entire structure, we can predict local properties of the structure.
- ⚠ One popular choice is a 3-valued helix/strand/other alphabet. Typically, predictors get about 80% accuracy on 3-state prediction.
- ⚠ Many machine-learning methods have been applied to this problem, but the most successful is neural networks.
- ⚠ Using Conditional Random Fields can improve sampling of sequences, without improving accuracy on individual residues.



Local Structure Alphabets

- 🦖 What local properties do we choose?
- 🦖 We want properties that are well-conserved through evolution, easily predicted, and useful for finding and aligning templates.
- 🦖 We have investigated many alphabets.
- 🦖 Current favorites are str2, a 13-state secondary-structure alphabet that distinguishes between different β strands, and near-backbone-11, and 11-state burial alphabet.



Contact prediction

- 🦖 Predict that residues separated along the chain are close in 3-space.
- 🦖 Use mutual information between columns.
- 🦖 Thin alignments aggressively (30%, 35%, 40%, 50%, 62%).
- 🦖 Compute e-value for mutual info (correcting for small-sample effects).
- 🦖 Compute rank of $\log(\text{e-value})$ within protein.
- 🦖 Feed $\log(\text{e-values})$, log rank, contact potential, joint entropy, and separation along chain for pair, and amino-acid profile, predicted burial, and predicted secondary structure for each residue of pair into a neural net.



(Rational) Protein Design

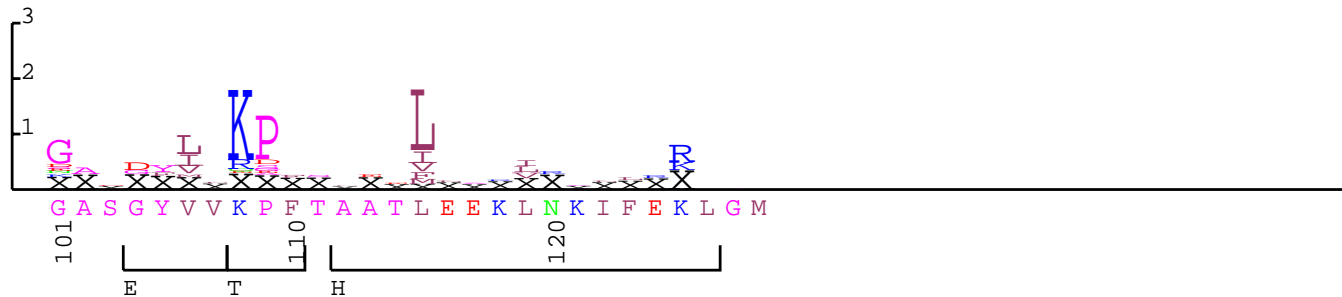
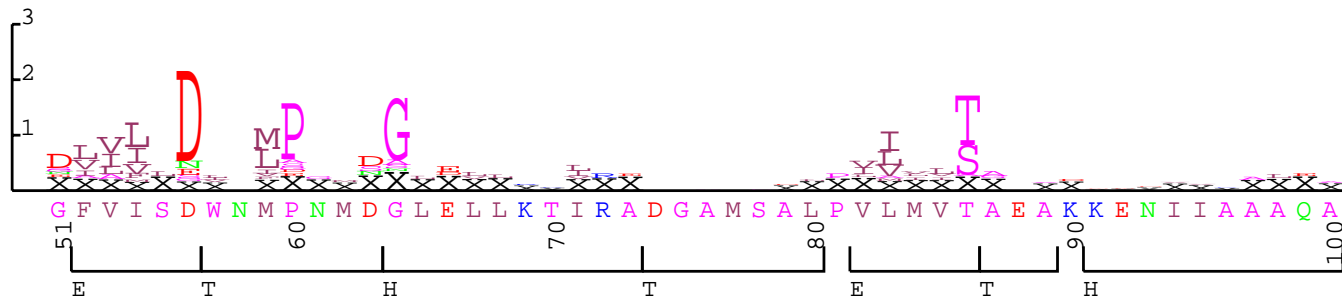
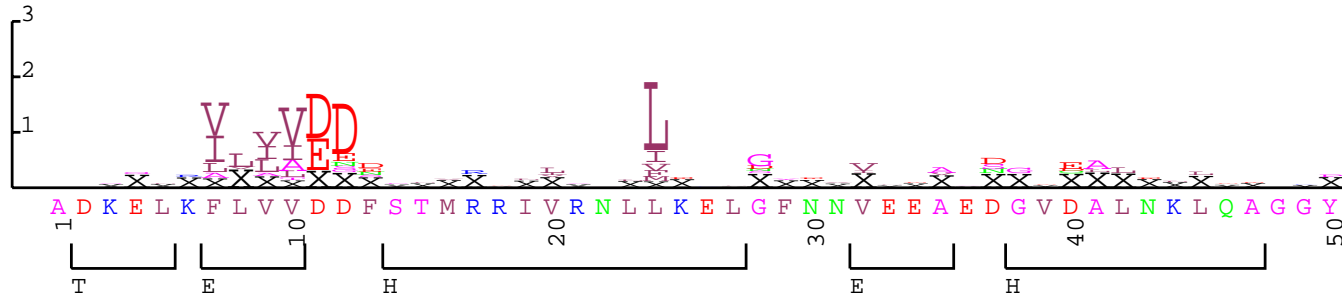
- 🦖 New direction for lab.
- 🦖 Use local-structure neural nets in reverse (find sequences highly predicted to have right local structure).
- 🦖 Train new neural nets to take local-structure inputs and provide amino-acid outputs.
- 🦖 Use undertaker to build models.
- 🦖 Use RosettaDesign to modify sequences.
- 🦖 Target applications: specific binding of carbon nanotubes, mimics for AGRP (agouti-related protein) binding to different melanocortin receptors.



Sequence logos (MSA)

Summarize multiple alignment:

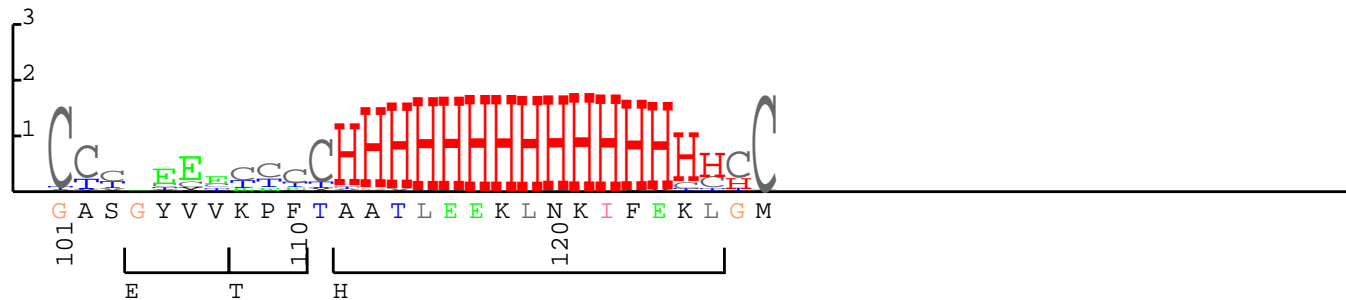
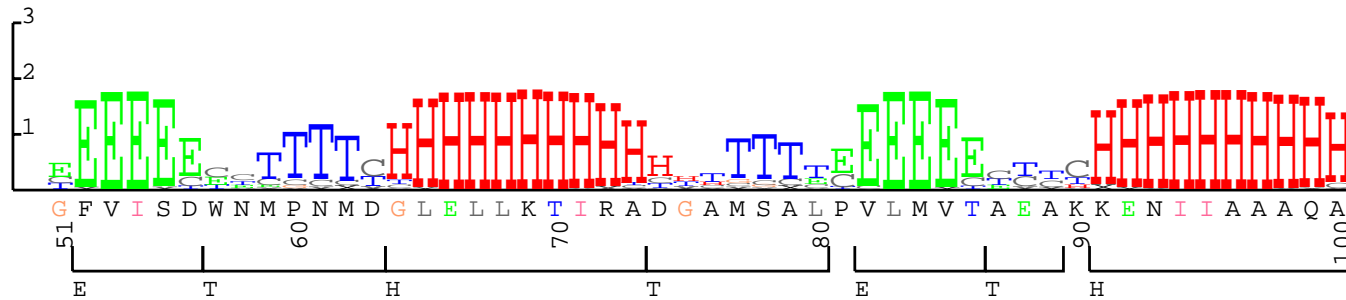
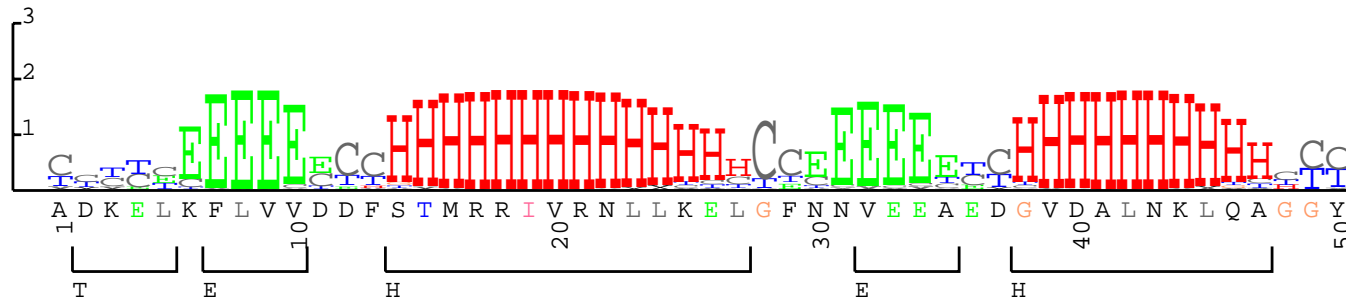
nostruct-align/3chy.t2k w0.5



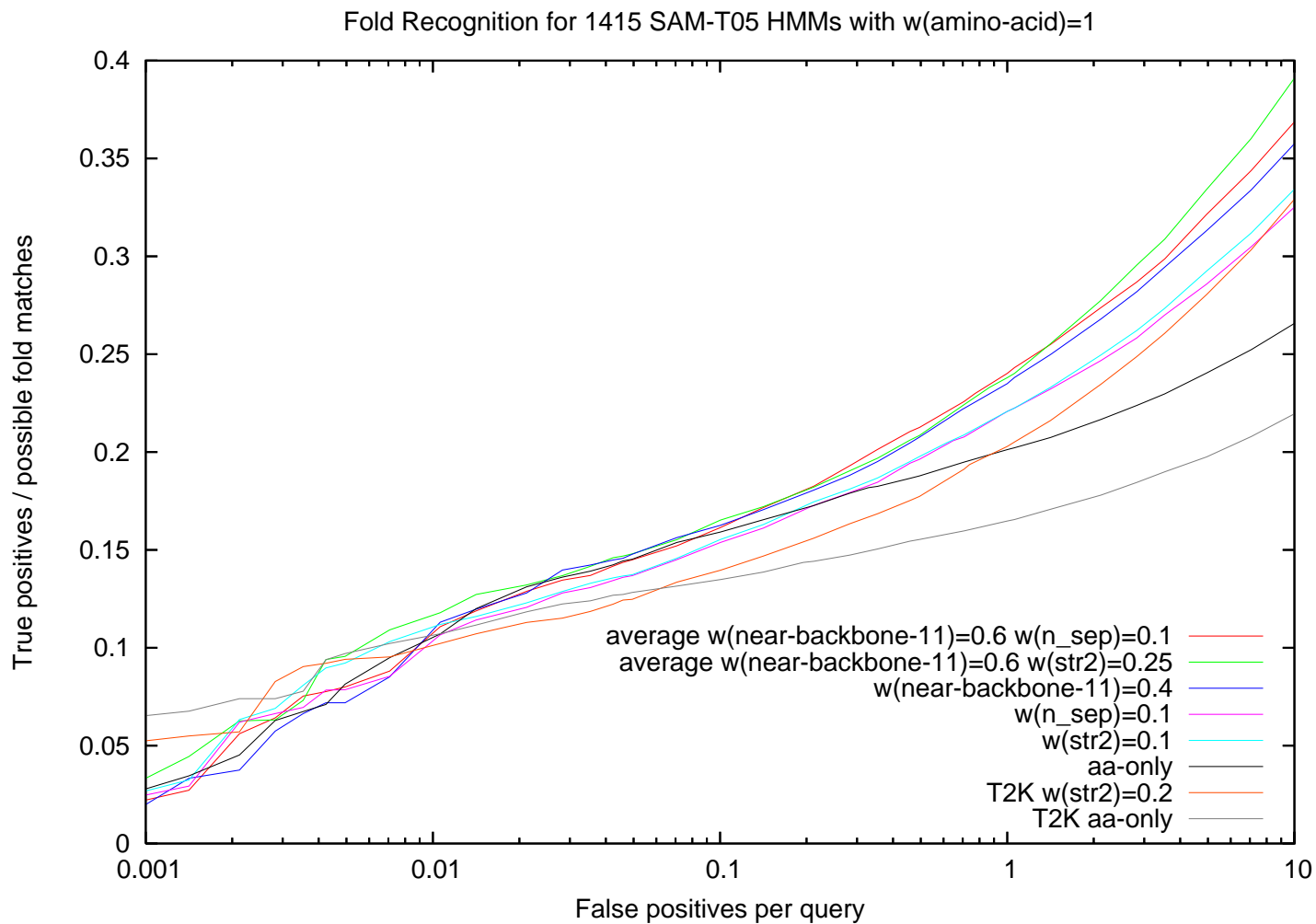
Sequence logos (NN)

Summarize local structure prediction:

nostruct-align/3chy.t2k EBGHTL

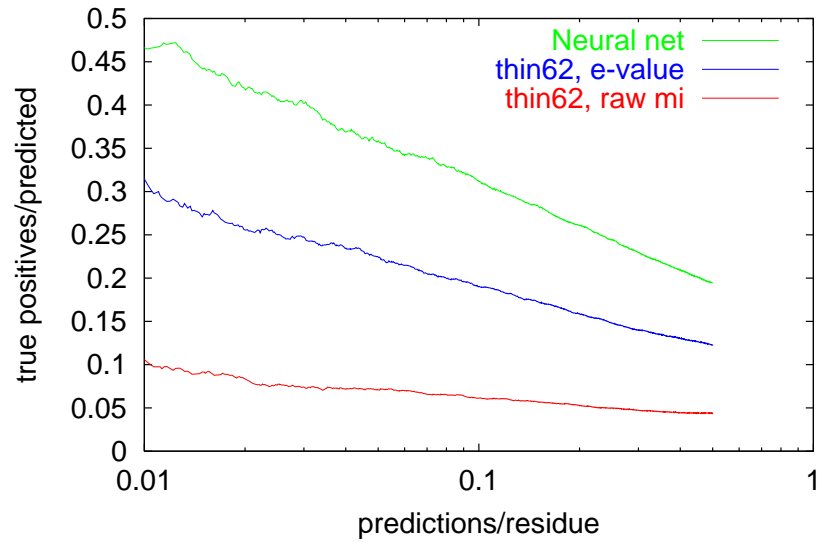


Fold recognition results

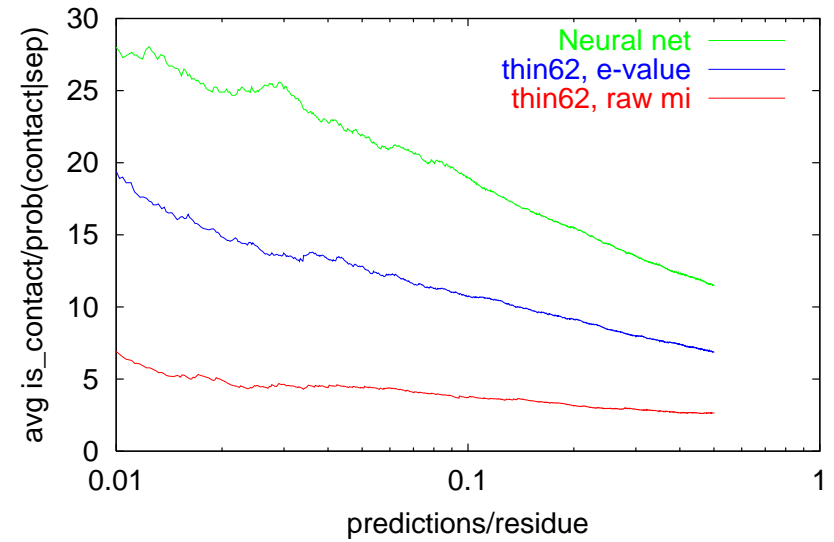


Contact prediction results

Accuracy of contact prediction, by protein



Weighted-accuracy of contact prediction, by protein



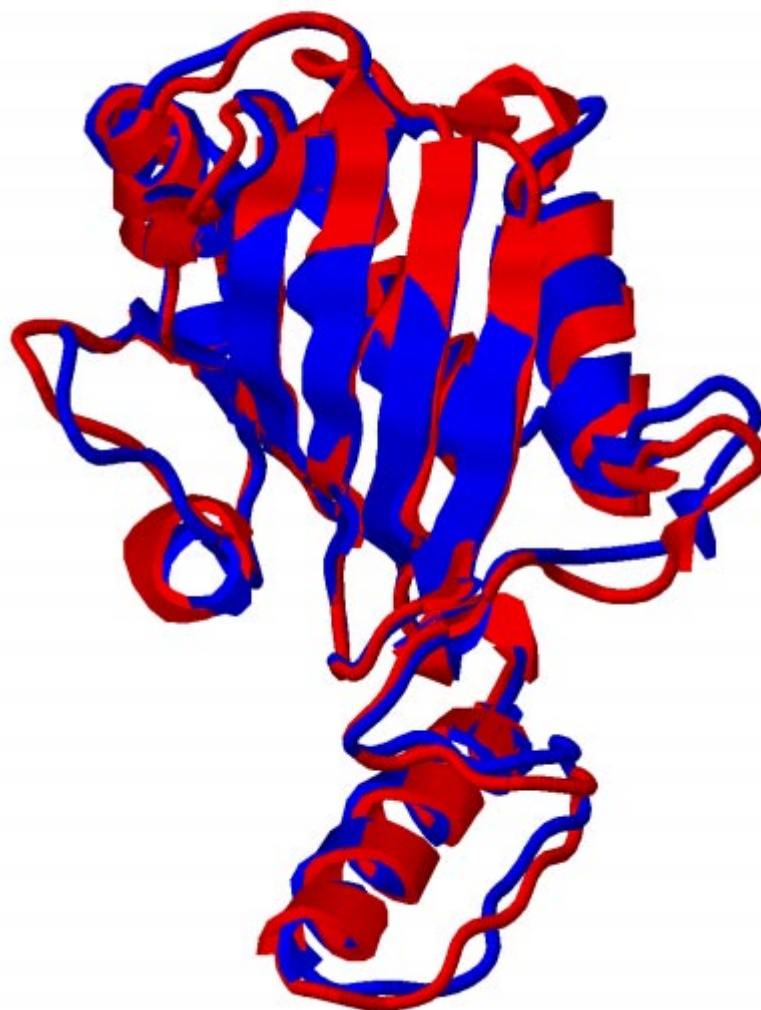
CASP Competition Experiment

- 🦖 Everything published in literature “works”
- 🦖 CASP set up as true blind test of prediction methods.
- 🦖 Sequences of proteins about to be solved released to prediction community.
- 🦖 Predictions registered with organizers.
- 🦖 Experimental structures compared with solution by assessors.
- 🦖 “Winners” get papers in *Proteins: Structure, Function, and Bioinformatics*.



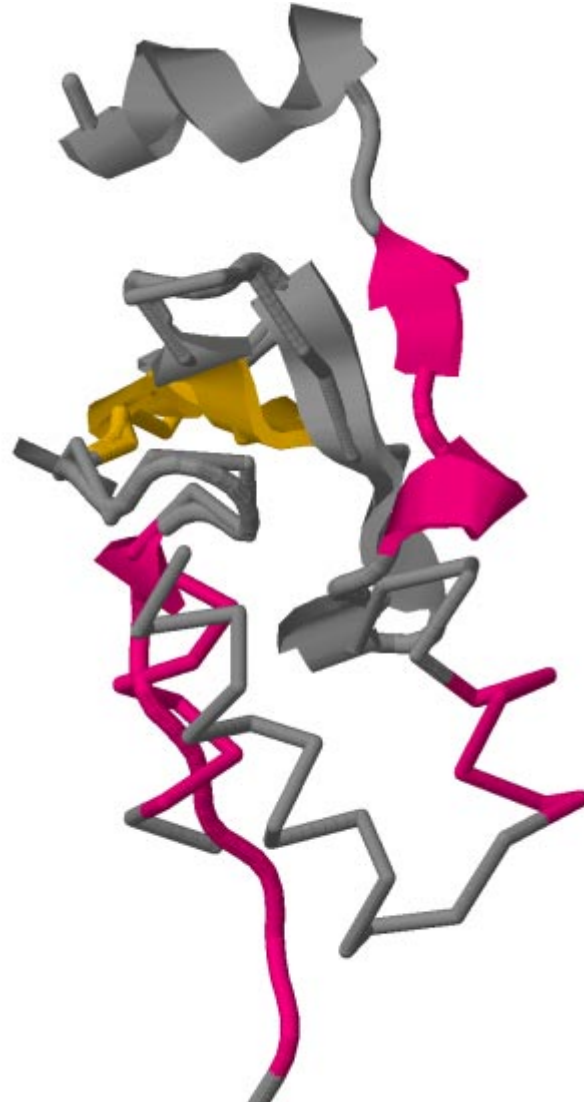
T0298 domain 2 (130–315)

RMSD= 2.468Å all-atom, 1.7567Å C_{α} , GDT=82.5%
best model 1 submitted to CASP7 (red=real)



Comparative modeling: T0348

RMSD= 11.8 Å C_{α} , GDT=58.2% (cartoon=real)
best model 1 by CASP7 GDT, Robetta1 slightly better.

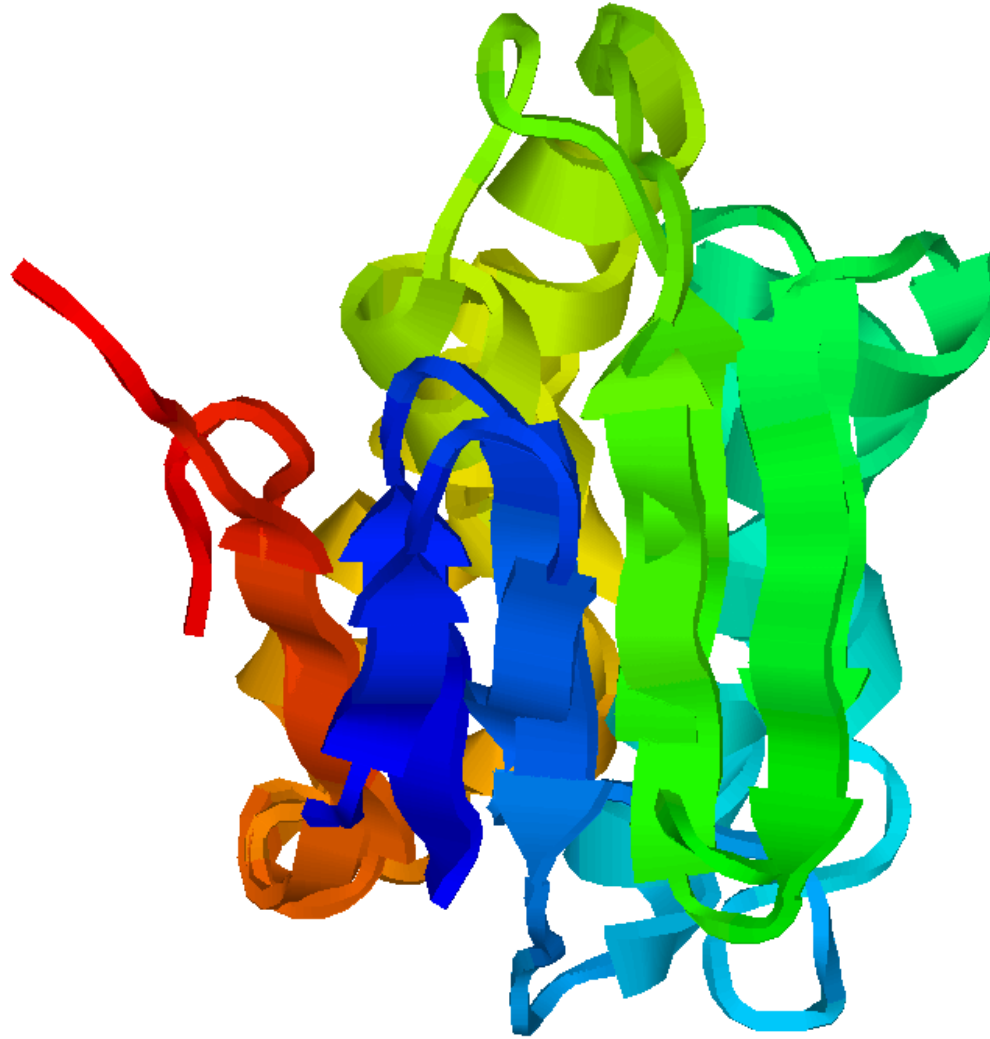


Target T0201 (NF, CASP6)

- ⚠ We tried forcing various sheet topologies and selected 4 by hand.
- ⚠ Model 1 has right topology (5.912Å all-atom, 5.219Å C_α).
- ⚠ Unconstrained cost function not good at choosing topology (two strands curled into helices).
- ⚠ Helices were too short.



Target T0201 (NF, CASP6)

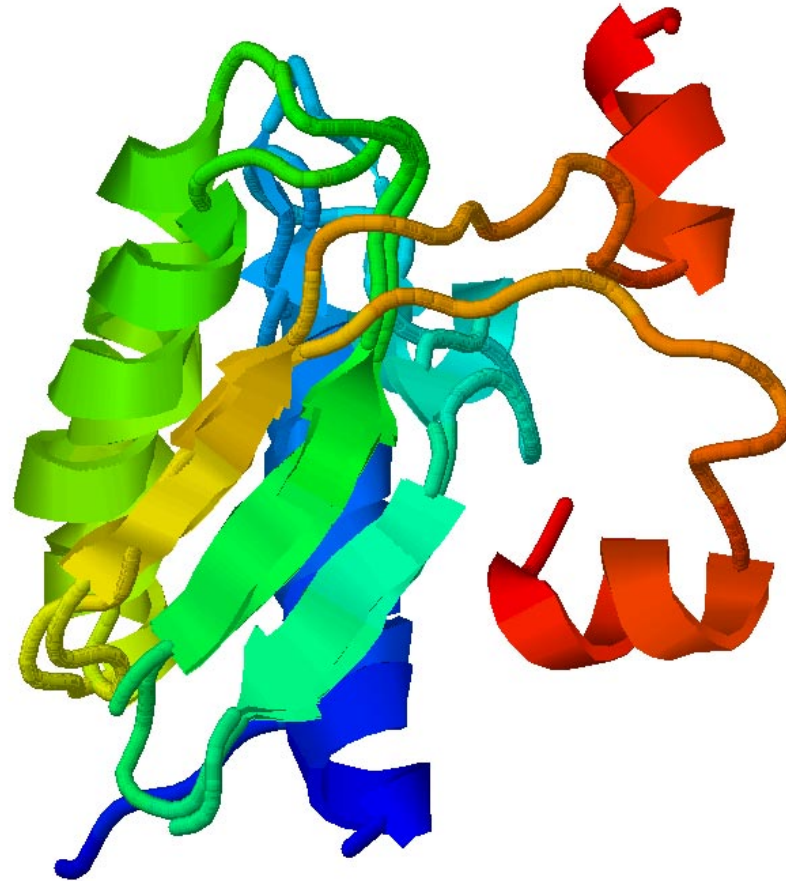


Target T0230 (FR/A, CASP6)

- 🦖 Good except for C-terminal loop and helix flopped wrong way.
- 🦖 We have secondary structure right, including phase of beta strands.
- 🦖 Contact prediction helped, but we put too much weight on it—decoys fit predictions better than real structure does.

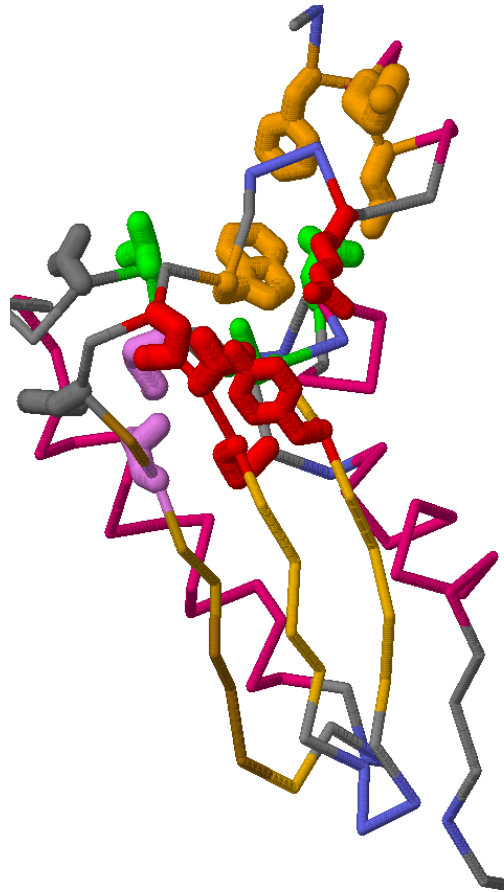


Target T0230 (FR/A, CASP6)



Target T0230 (FR/A)

Real structure with contact predictions:



Web sites

These slides:

<http://users.soe.ucsc.edu/~karplus/papers/what-lab-does-oct-2009.pdf>

CASP2 through CASP8—all our results and working notes:

<http://users.soe.ucsc.edu/~karplus/casp2/>

...

<http://users.soe.ucsc.edu/~karplus/casp8/>

SAM-T08 prediction server:

http://compbio.soe.ucsc.edu/SAM_T08/T08-query.html

UCSC bioinformatics (research and degree programs) info:

<http://compbio.soe.ucsc.edu/>

