

# CMPE-242

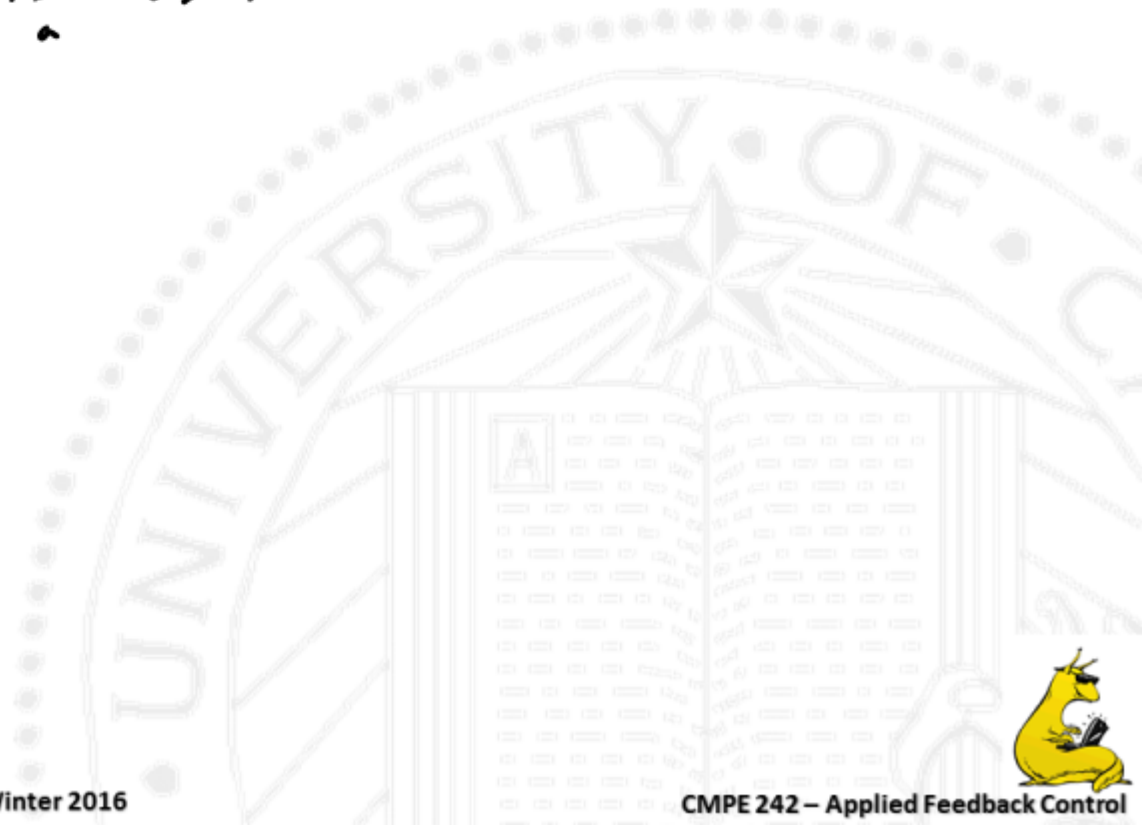
## Applied Feedback Control

Gabriel Hugh Elkaim  
Winter 2016



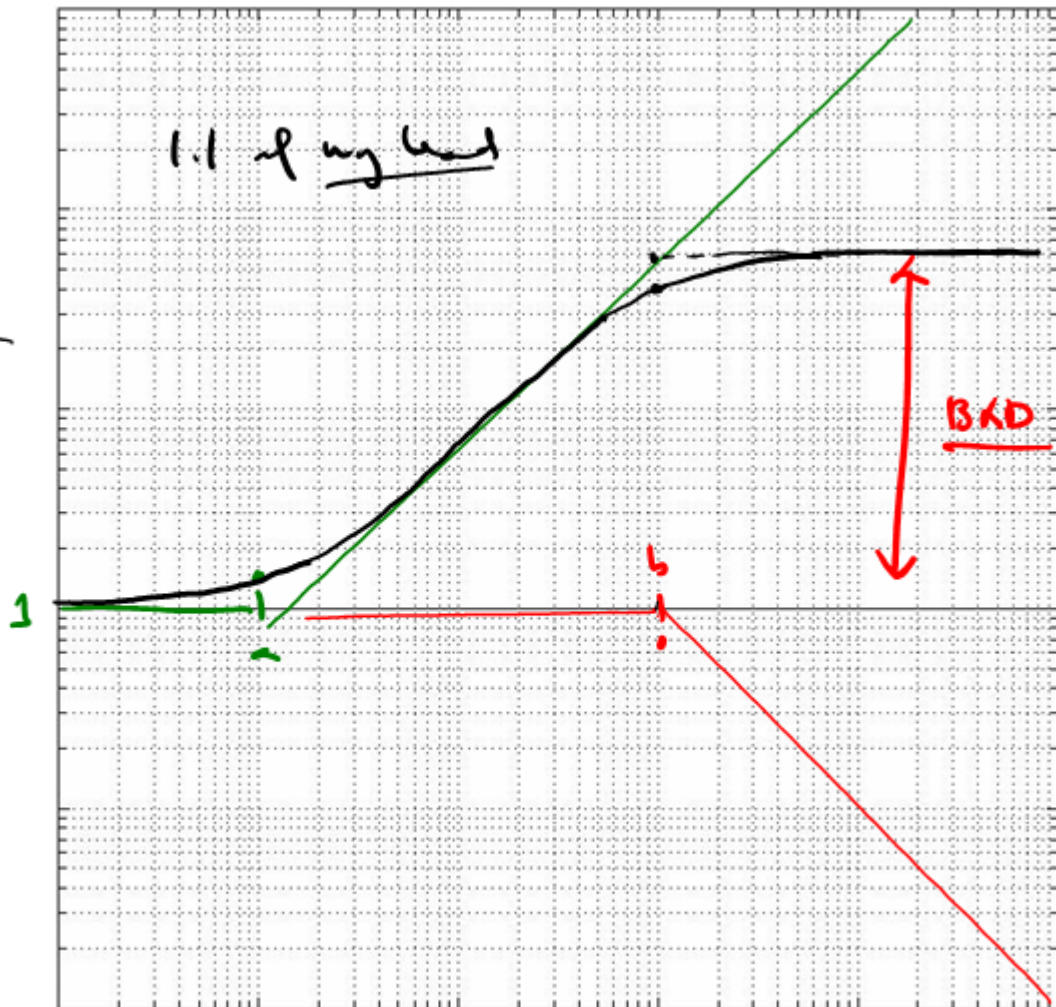
CEAD

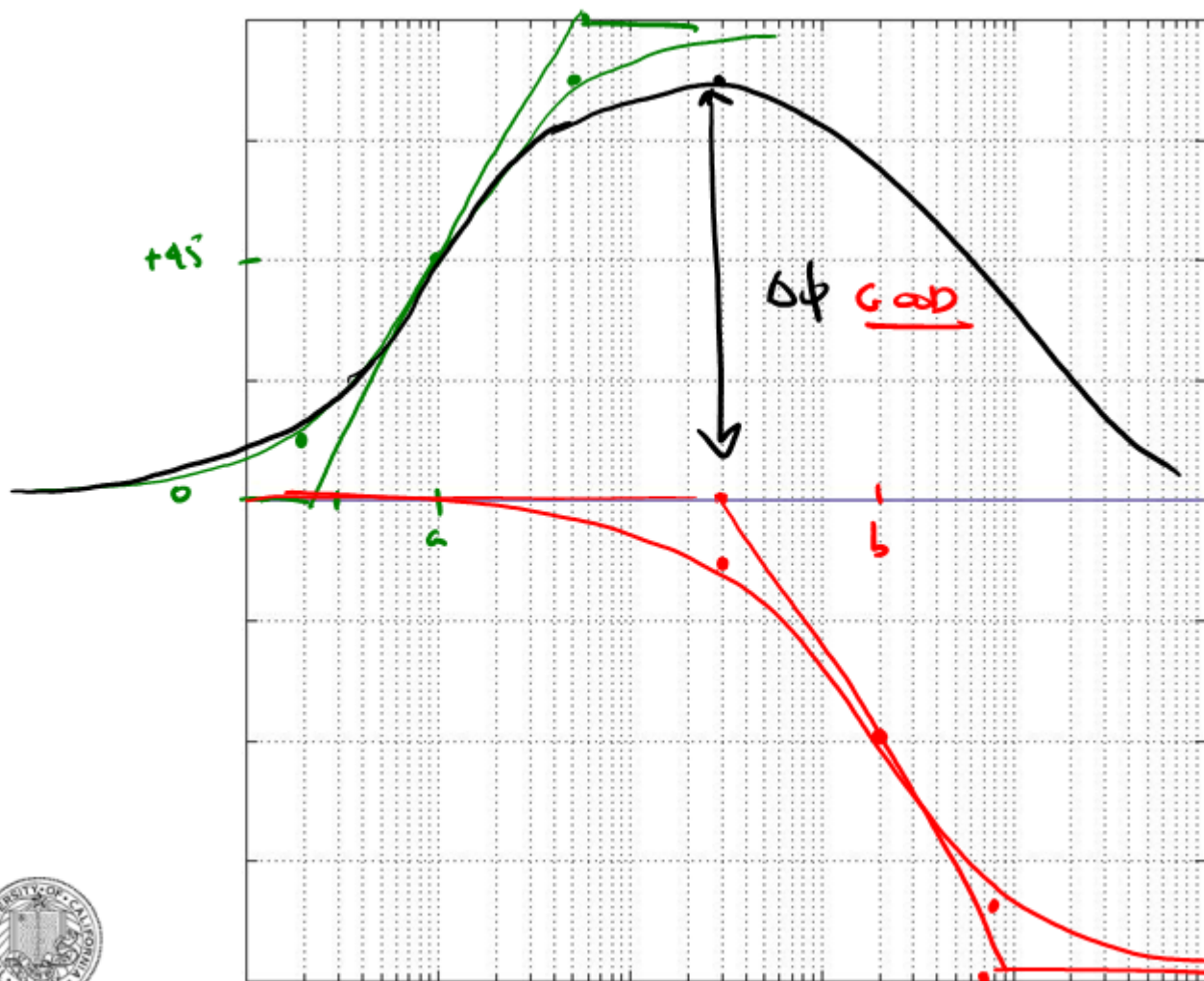
$$k \frac{s+a}{s+b} \cdot \frac{b}{s} \quad b > a$$



$$\frac{K\tau + a}{\tau + b}$$

l.l. of asymptote





Boost

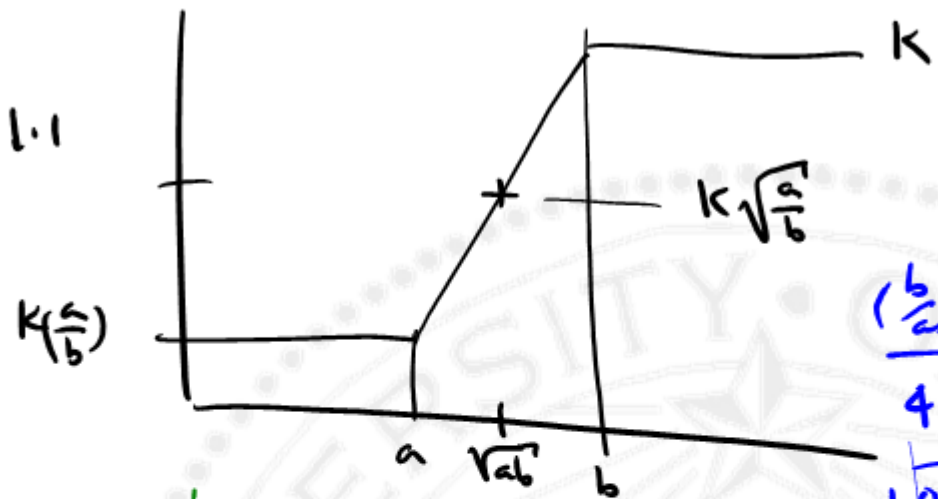
////////

Boost

////////

ATTENUATE





$(\frac{b}{a})$	SoM
4	$30^\circ$
10	$45^\circ$
25	$68^\circ$
50	$72^\circ$

